



POWERSTAR



SOFIA SERIES

PS-GDL12-50WC38

RECESSED DOWNLIGHT

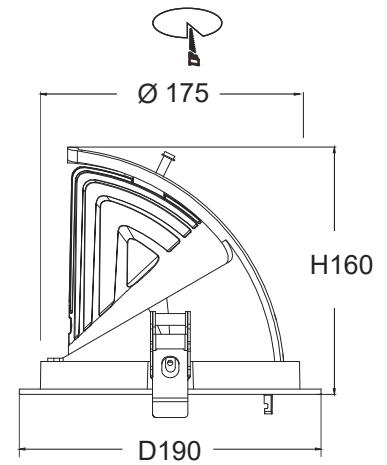
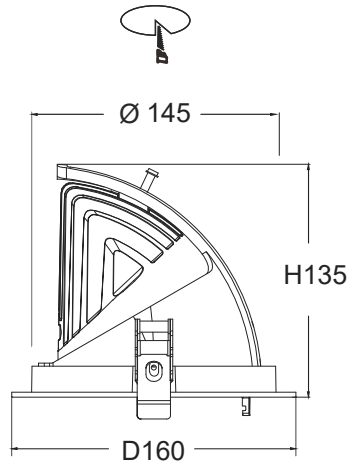
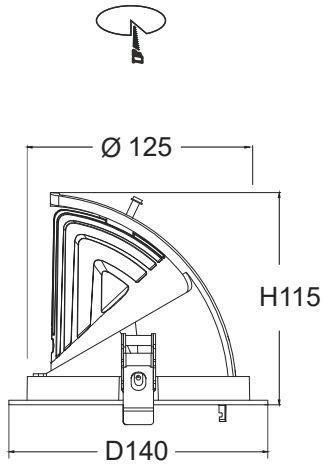
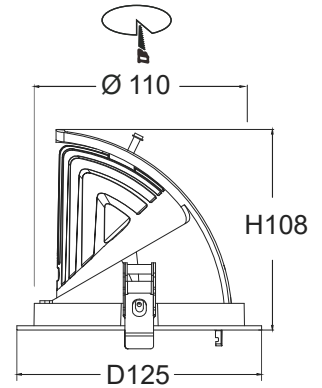
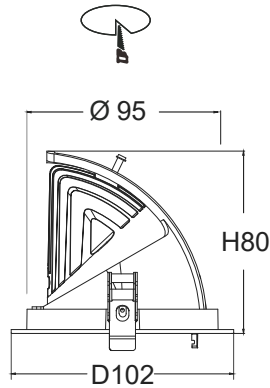
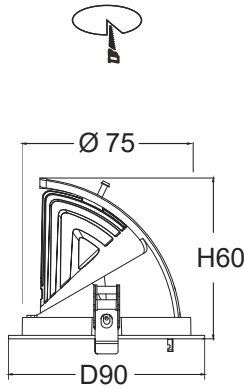
PREMIUM COB LED WITH SDCM<5

QUALITY OPTICS DESIGN WITH UGR<19

PRODUCT DATASHEET

Sofia Series Gimbal Downlight XXW

Dimensions (mm)



Areas of application

- Supermarket, Shopping Mall
- Retail Store
- Fashion Store
- Car Shop, Office, Meeting Room

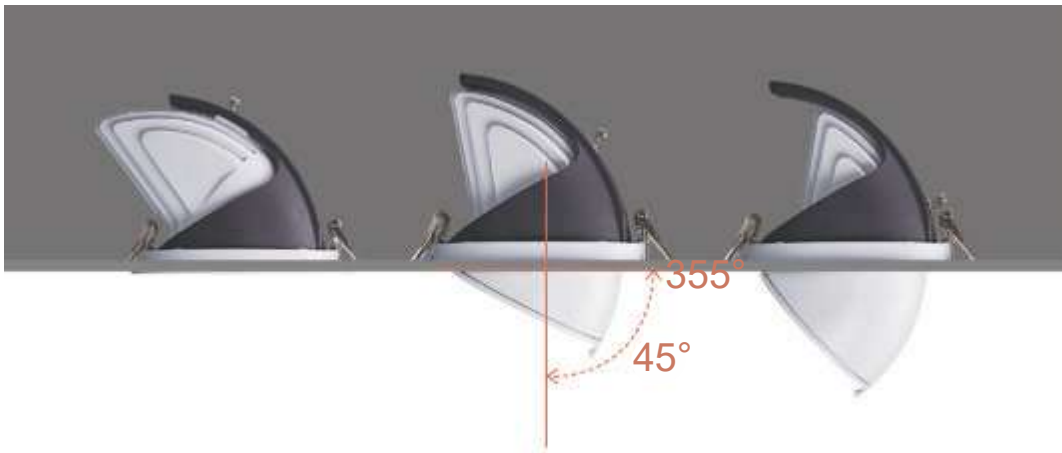
Product features

- System efficiency up to 100lm/w, energy saving
- Uniform light distribution with 15°, 24°, 38° beam angle
- Professional COB LED with carefully selected batch SDCM<5
- More than 70.000 hours life span

Product benefits

- Employs a high PF flicker-free power supply
- Easy and quick installation with multiple track adapters
- Elegant and compact design
- Compliant with CE/CB/RoHS/SAA /ENEC certificates

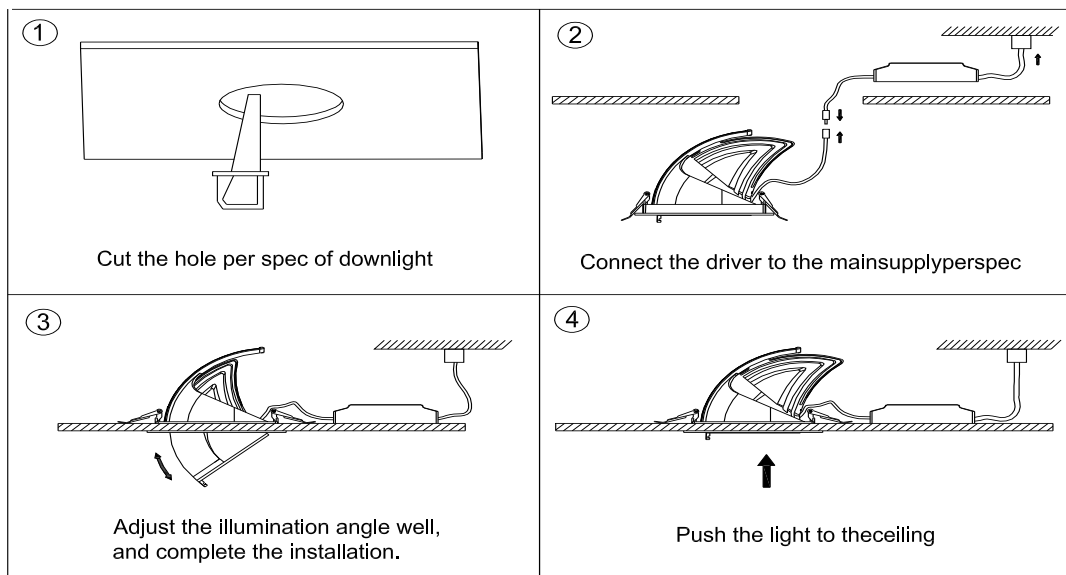
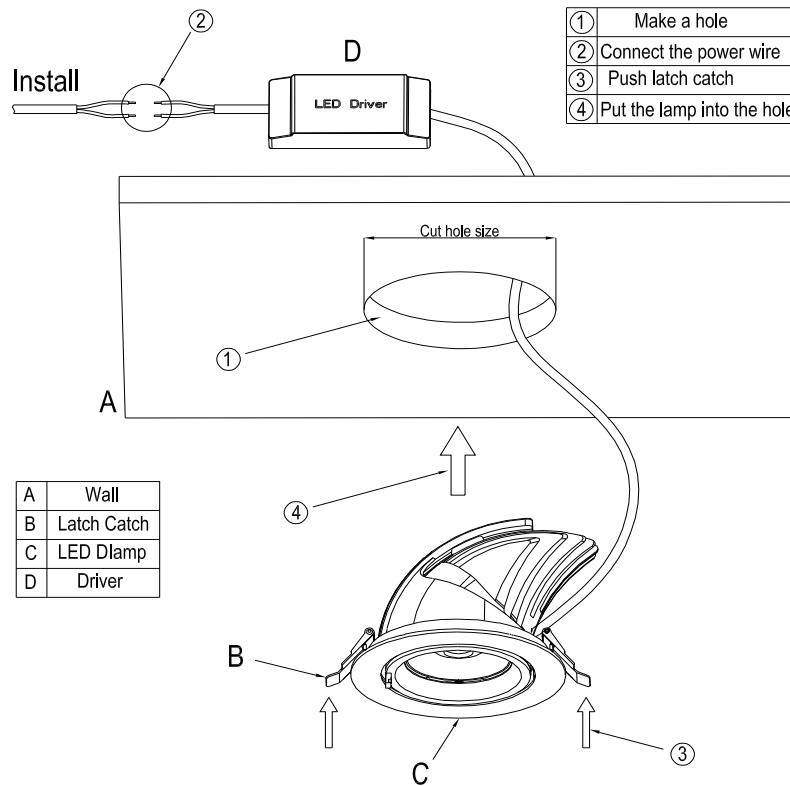
Specification		
Power	12/15/20/25/30/40-50W	
LED	COB	
Driver	CE Flicker Free driver	
Input Voltage	AC220-240V, 50/60Hz	
CCT	2700/3000/3500/4000/5000K	
CRI	80Ra/90Ra/97Ra	
SDCM	<5	
Beam Angle	15°/24°/38°	
UGR	<19	
Optics	Reflector	
System Efficacy	100lm/W	
Housing Material	Aluminum	
Warranty	5 Years	
Colour Of Housing	White / Black	
PF	>0.9	
THD	<15%	
Dimmable	0-10V/ DALI/ BLE	
Flicker	Flicker free	



PRODUCT DATASHEET

Sofia Series Gimbal Downlight XXW

Installation



Installation instructions:

Electrical connection must only be carried out by skilled, trained and authorized persons.

- Before installation, please ensure the main power is off.
- Be sure that the local power outlet matches that of the required voltage for this unit.
- Always mount this unit in safe and stable matter.
- Do not remove the cover under any conditions. There are no user serviceable parts inside.
- This unit is intended for indoor use only, use of this product outdoors, would void all warranties.